



WORLD'S BEST
ALLOY BULLBARS

East Coast Bullbars (ECB Pty Ltd)

Tel: 07 3897 5700

Fax: 07 3283 1168

ecb@ecb.com.au www.ecb.com.au

29 Snook St
Clontarf QLD 4019
Australia

Po Box 122
Margate QLD 4019
Australia

BMB47SY

REPLACES: 29.04.10
REVISED: 06.12.10

FITTING INSTRUCTIONS

MERCEDES BENZ SPRINTER 10/06 on BIG TUBE™ BAR VEHICLE FRONTAL PROTECTION SYSTEM (VFPS) BAR FOR AIR BAG AND ADR COMPLIANT VEHICLES

Check installation hardware before commencing.

1. Lift bonnet
2. Remove four T25 Torx head screws from grille. Remove grille by firmly pulling upward.
3. Remove one T30 Torx head screw and one T 25 Torx head screw (per side) from metal panel beside headlamps.
4. Remove five plastic push pull clips (per side) from side wing and wheel arch of vehicle. Remove two T45 Torx head bolts from step and two 13mm head bolts beside number plate. Gently remove wheel arch splash guards from behind sides of bumper. **CAUTION:** White steel panel under headlamp is attached to bumper and clipped to guards. **Clip is easily broken. See figure 1.** Remove air sensor from rear of bumper as plastic bumper is removed.
5. Using a small flat blade screwdriver, gently unclip white metal fill panel and remove bumper assembly.
6. Remove lower two 13mm head bolts (per side) from front of bumper support panel. **See figure 2.** Using a sharp knife remove sealant from around holes. **NOTE: Blow all fillings clear and treat all exposed metal with a rust inhibitor.**
7. Fit ECB steel mounts to front of chassis rail and cross member using one M8 x 1.25 x 30 bolts, flat washers and spring washers (supplied) in centre and two M8 x 1.25 x 40 bolts for lower area where original equipment bolts have been removed. **FINGER TIGHTEN ONLY. See figure 3.**
8. Align mounts centrally on vehicle using inside – inside measurement on alloy mounts on ECB frontal protection bar as a guide. **TIGHTEN ALL BOLTS. See figure 4.**
9. Using steel mount as a guide, drill two 10 mm holes (per side) into underside of chassis, centrally in slots. . **NOTE: Blow all fillings clear and treat all exposed metal with a rust inhibitor. See figure 5**
10. Using two 3/8 x 1 ½ bolts and washers on 400mm wire, flat washers spring washers and nuts, attach mount to chassis . **FINGER TIGHTEN ONLY.**
11. On drivers side of vehicle, remove centre M8 x 1.25 x 30 bolt previously fitted and fit over top of mount, 4mm temperature sensor mount. Refit bolt and tighten. Fit temperature sensor into mount by disconnecting wiring, feed sensor into hole and reconnect wiring. **See figure 6.**
12. Check mount measurement to bar. **TIGHTEN ALL BOLTS.**



**WORLD'S BEST
ALLOY BULLBARS**

East Coast Bullbars (ECB Pty Ltd)

Tel: 07 3897 5700

Fax: 07 3283 1168

ecb@ecb.com.au www.ecb.com.au

29 Snook St
Clontarf QLD 4019
Australia

Po Box 122
Margate QLD 4019
Australia

13. Remove bumper side slides from guard area. Two T45 Torx head bolts. Refit guard to vehicle using one M8 x 1.25 x 30 bolt , flat washer and spring washer in rear hole and one M8 x 1.25 x 30 bolt, flat washer and spring washer, thru rear facing 8mm alloy plate into front hole, tighten rear bolt firmly. Finger tighten front bolt only. **See figure 7**
14. Using a small flat blade screwdriver, remove white metal panel from bumper.
15. Re-fit white panel and grille to vehicle front as per reverse of step 2&3.
16. Splice ECB indicator/ park wiring into original wiring loom behind headlamps.
17. Fit ECB indicator / park lights into protection bar as per instructions supplied with the LED indicator kit.
NOTE: Ensure park light is to outside. See figure 8.
18. Fit 6mm clip lock trim to rear of protection bar. **NOTE: Trim off lower edge on an angle so trim will sit flush with end of protection bar. See figures 9, 10 and 11.**
19. Remove skirt vents from protection bar.
20. Position protection bar on outside of steel mounts. Use six ½ x 1 ½ bolts, flat washers ,spring washers and nuts (supplied). Align in position, **TIGHTEN ALL BOLTS. See figure 12 and 13.**
21. Using 3/8 x 1 ½ bolts, flat washers, spring washers and nuts (supplied) , fit wing mounts to guard brackets. Tighten alloy bracket to guard. **TIGHTEN ALL BOLTS.**
22. Connect ECB indicator / park lights. Check operation.
23. Fit centre under body guard (supplied) to rear of lower cross member bolts. Front of under body guard sits on top of ECB protection bar skirt. Secure using M8 Nyloc nuts and washers at rear and three ¼ x 25 bolts, flat washers and nyloc nuts (supplied) at front.
24. For vehicles with large vacuum canister on driver's side of vehicle: Remove from chassis rail, two 10mm head nuts. Fit canister to top of ECB steel mounting bracket (supplied), using two ¼ x 25 bolts, flat washers and nyloc nuts (supplied). Carefully push canister up into opening behind headlight and secure back to chassis rail using two M6 nyloc nuts and washers. Ensure canister and associated piping does not rub on surrounding parts. **See figure 14.**
25. With a sharp knife, trim lower flap from underside of inner guards. **See figure 15. CAUTION:** Take care not to cut through bottom of inner guard as this will weaken the underside of the inner guard and may cause it to rip after a period of time. Fit side under body plates (supplied) to front of under body skirt using two ¼ x 1 bolts, flat washers and nyloc nuts (supplied). Firmly tighten bolts (take care not to over tighten). **See figure 16.** Fold inner guard to allow ECB under body skirt to sit to top of side skirt of Protection Bar. Fit using two ¼ x 1 bolts, flat washers and nyloc nut (supplied), at under side front of side skirts, place bolt in from bottom and nut to top and one ¼ x 1 bolt, flat washers and nyloc nut (supplied) into ECB steel mounting bracket. **TIGHTEN ALL BOLTS. See figure 17.**
26. Refit skirt vents to protection bar.

ENSURE NUMBER PLATE IS CLEARLY VISABLE

Note: When fitting/refitting the licence plate to the vehicle, ensure there is no obstruction to licence plate vision in accordance with local authorities. If required relocate licence plate to an alternate location.



**WORLD'S BEST
ALLOY BULLBARS**

East Coast Bullbars (ECB Pty Ltd)

Tel: 07 3897 5700

Fax: 07 3283 1168

ecb@ecb.com.au www.ecb.com.au

29 Snook St
Clontarf QLD 4019
Australia

Po Box 122
Margate QLD 4019
Australia

Further VFPS Notes:

- Do not attach VFPS to the vehicle using anchorages not intended for this purpose (e.g. engine mounting bolts).
- Do not use this product for any vehicle make or model, other than those specified by the VFPS manufacturer.
- Do not remove the plaque or label from the VFPS.
- Do not modify the structure of the VFPS in any way.
- No accessory or fitment should project forward of the VFPS forward profile.
- ENSURE THESE INSTRUCTIONS ARE LEFT WITH VEHICLE OWNER AND/OR OPERATOR.**

IMPORTANT INFORMATION

Periodically check bolts and nuts for correct tightness, especially if travelling on rough roads

FITTING KIT

| | |
|--|---|
| 1 – Pair Steel mounting brackets. | 6 – ½ spring washers |
| 2 – Alloy guard support mounts. | 6 – ½ nuts |
| 1 – Canister steel mounting bracket | 4 – M8 x 1.25 x 30 bolts |
| 1 – Centre under body guard | 4 – M8 x 1.25 x 40 bolts |
| 1 – Pair side under body guards | 10 – M8 flat washers |
| 1 – Steel temperature sensor mount | 8 – M8 spring washers |
| 4 – 3/8 x 1 ½ bolts and washers on 400mm wire. | 15 – ¼ x 1 bolts |
| 2 – 3/8 x 1 ½ bolts | 32 – ¼ flat washers |
| 8 – 3/8 flat washers | 15 – ¼ Nyloc nuts |
| 6 – 3/8 spring washers | 2 – M6 Nyloc nuts |
| 6 – 3/8 nuts | 1 – 3mtr length 6mm clip lock trim |
| 6 – ½ x 1 ½ bolts | 6 – Cable locks |
| 12 – ½ flat washers | 1 – ECB LED Indicator / Park light kit. |

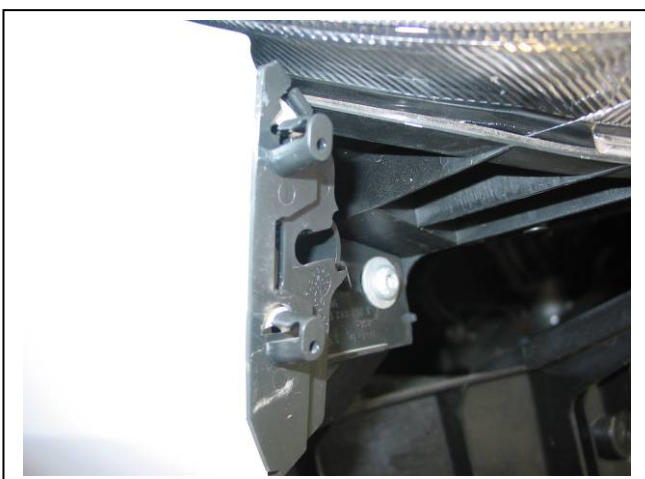


Figure 1: Drivers side panel clip



Figure 2: Remove lower two 13mm head bolts



WORLD'S BEST
ALLOY BULLBARS

East Coast Bullbars (ECB Pty Ltd)

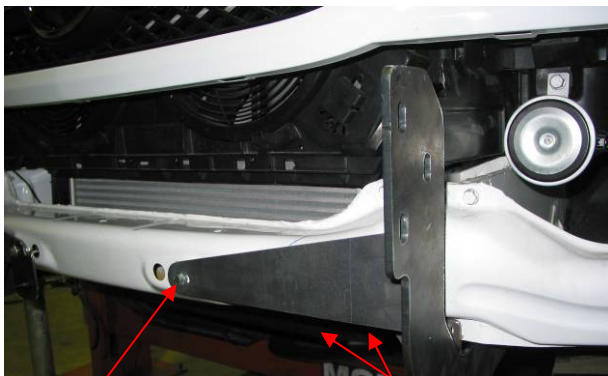
Tel: 07 3897 5700

Fax: 07 3283 1168

ecb@ecb.com.au www.ecb.com.au

29 Snook St
Clontarf QLD 4019
Australia

Po Box 122
Margate QLD 4019
Australia



One M8 x 1.25 x 30
bolt

Two M8 x 1.25 x 40
bolts

Figure 3: Passenger side shown

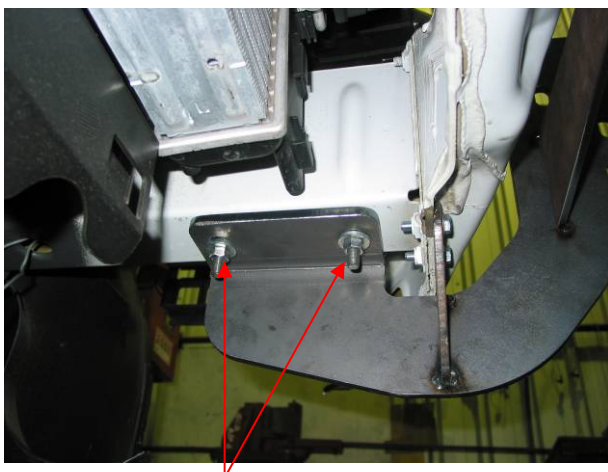


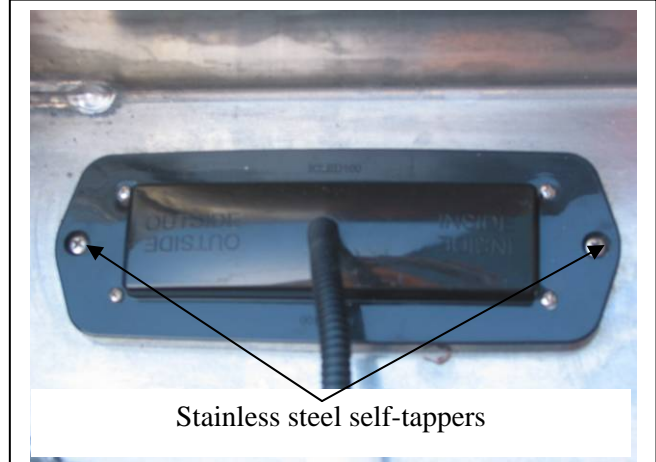
Figure 5: Drill two 10mm holes in underside of chassis



Figure 6: Temperature sensor fitted



Figure 7: Alloy guard mount



Stainless steel self-tappers

Figure 8



**WORLD'S BEST
ALLOY BULLBARS**

East Coast Bullbars (ECB Pty Ltd)

Tel: 07 3897 5700

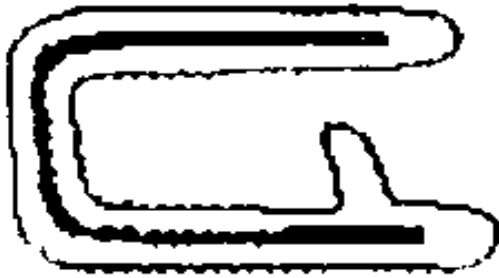
Fax: 07 3283 1168

ecb@ecb.com.au www.ecb.com.au

29 Snook St
Clontarf QLD 4019
Australia

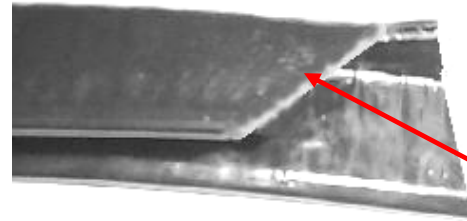
Po Box 122
Margate QLD 4019
Australia

Top



6mm Black clip lock trim

Figure 9



Trim
lower edge
on an
angle

Figure 10



Attach 6mm clip lock trim

Figure 11



Figure 12 – Front view



Figure 13 – Side view



Figure 14 – Canister bracket fitted



**WORLD'S BEST
ALLOY BULLBARS**

East Coast Bullbars (ECB Pty Ltd)

Tel: 07 3897 5700

Fax: 07 3283 1168

ecb@ecb.com.au www.ecb.com.au

29 Snook St
Clontarf QLD 4019
Australia

Po Box 122
Margate QLD 4019
Australia



Figure 15 – Cutting flap from inner guard.



Figure 16 – Under body guard attached to inner guard.

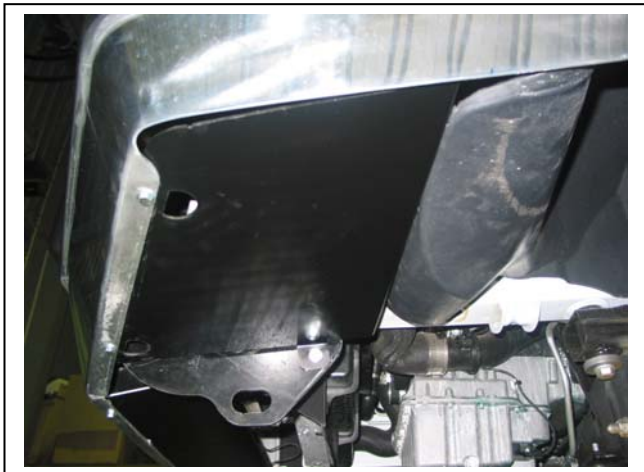


Figure 17 – Under body guard fitted.



**WORLD'S BEST
ALLOY BULLBARS**

East Coast Bullbars (ECB Pty Ltd)

Tel: 07 3897 5700

Fax: 07 3283 1168

ecb@ecb.com.au www.ecb.com.au

29 Snook St
Clontarf QLD 4019
Australia

Po Box 122
Margate QLD 4019
Australia

We value your comments

Dear Fitter,

ECB would like to know how you went with the installation of this product. We value your comment and may need to contact you to clarify some details so please complete your contact details clearly.

We would appreciate if you could complete as many of the following details as possible.

| | |
|-------------------------------|--|
| Your Name: | Your contact No. |
| Product Part No. | Product Invoice No. |
| Product Description: | Make, model, and year of vehicle: |
| Product Work Order No. | Company your from/Company product purchased from: |

Date of fitment: ____/____/____

Was the fitting hardware supplied complete?

Yes

☐

No

☐

If no what was not supplied

Did the installation go well?

Yes

☐

No

☐

Please provide comments

Please draw diagrams if you need to.

Post to
Reply Paid122
PO Box 122
Margate QLD 4019

Fax to
(07) 3283 1168



**WORLD'S BEST
ALLOY BULLBARS**

East Coast Bullbars (ECB Pty Ltd)

Tel: 07 3897 5700

Fax: 07 3283 1168

ecb@ecb.com.au www.ecb.com.au

29 Snook St
Clontarf QLD 4019
Australia

Po Box 122
Margate QLD 4019
Australia



**WORLD'S BEST
ALLOY BULLBARS**

East Coast Bullbars (ECB Pty Ltd)

Tel: 07 3897 5700

Fax: 07 3283 1168

ecb@ecb.com.au www.ecb.com.au

29 Snook St
Clontarf QLD 4019
Australia

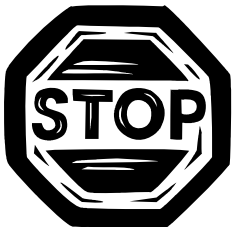
Po Box 122
Margate QLD 4019
Australia

DESPATCH CHECKLIST BMB47SY

| | |
|--------------|--|
| Work Order # | |
| Finish: | |
| Transport: | |
| Due Date: | |

- ☐ 1 – Pair Steel mounting brackets.
- ☐ 1 – Steel canister bracket
- ☐ 1 – Centre under body guard (p/c black)
- ☐ 1 – Pair side under body guards (p/c black)
- ☐ 1 – Steel temperature sensor mount – **In bolt kit**
- ☐ 2 – Alloy guard support mounts – **In bolt kit**
- ☐ 1 – Bolt Kit
- ☐ 1 – ECB LED Indicator / Park light kit.
- ☐ 1 – 3000mm Length 6mm clip lock
- ☐ 2 – ECB Overrides – **Fitted to bar**
- ☐ 3 – 3mm Air scoops – **Fitted to bar**
- ☐ 3 – 6mm Air scoops – **Fitted to bar**

**See other side of
this page for
photos of all
mounts**



Is this product “the best it can be” Yes ____/____

Wrapper's initials / Checker initials

If NO fix before continuing

All parts checked and completed by:

Nut and bolts: _____ Date ____/____/____

Order control: _____ Date ____/____/____

Final wrap check: _____ Date ____/____/____



**WORLD'S BEST
ALLOY BULLBARS**

East Coast Bullbars (ECB Pty Ltd)

Tel: 07 3897 5700

Fax: 07 3283 1168

ecb@ecb.com.au www.ecb.com.au

29 Snook St
Clontarf QLD 4019
Australia

Po Box 122
Margate QLD 4019
Australia

